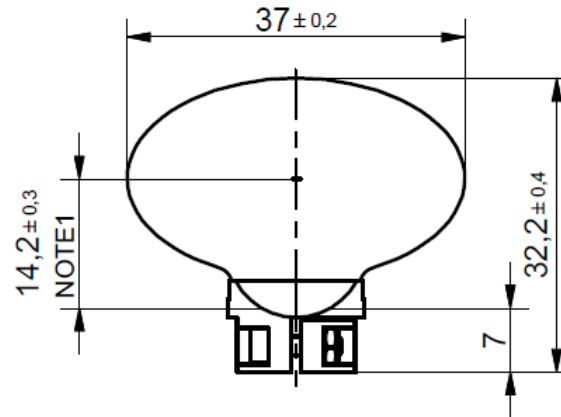
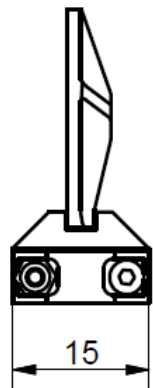


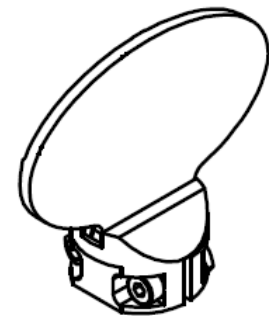
x20G optoSiC+inclusiv glued SM-mount for 7 mm shaft

$J = 4.21g \cdot cm^2$
 $M = 8.55g$



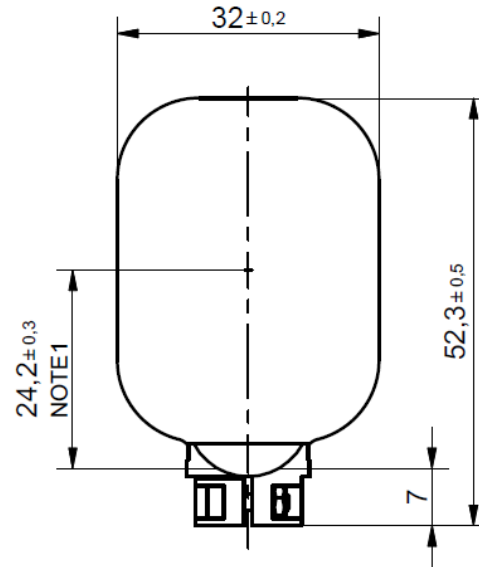
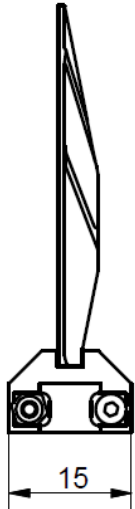
Notes:

1. Dimension from end of the shaft to the center of the clear aperture.
2. Screw size = M2x8mm
3. Nut size = M2
3. Hex Key Size = 1,5mm
4. Recommended screw torque : 0,6Nm
5. Bore-Diameter 7H7



y20G optoSiC+inclusiv glued SM-mount for 7 mm shaft

J = 4.22g*cm²
M = 10.28g



Notes:

1. Dimension from end of the shaft to the center of the clear aperture.
2. Screw size = M2x8mm
3. Nut size = M2
3. Hex Key Size = 1,5mm
4. Recommended screw torque : 0,6Nm
5. Bore-Diameter 7H7